



CENTRIFUGAL DIRECT DRIVEN FANS

CBTR Series



CONTINUOUS OPERATION

Range of single inlet direct drive centrifugal fans designed for continuous extraction of air stream up to 120°C.

Casings are manufactured from lockform seam sheet steel with a tough grey colour, epoxy-polyester paint coating.

All models incorporate backward curved centrifugal impellers manufactured from electro-welded sheet steel and protected by a cold galvanizing process.

Motors

2 pole motors.

All motors are **IP55, class F**.

Electrical supply:

Three-phase 230/400V-50Hz up to 3kW and 400V-50Hz for higher motor powers.

Additional Information

Standard supplied position: LG 270.

On request

- Fan supplied in RD positions.
- 6 or 8 pole motors.
- Scroll drain hole.
- Scroll inspection door.
- Fan assembled without motor support. (MB versions – flange mounted motor B5).
- Manufacturing in different materials (such as AISI 304 or AISI 316).
- High temperature versions, up to 250°C (R versions).
- Belt driven versions.
- ATEX versions.
- 60Hz application.
- 2-speed motor.
- High efficiency IE2 Motors.
- Motor with PTC thermal protection.

On request, explosion proof versions in accordance to ATEX Directive for three phase models:

- Increased safety **Ex II2G EExII T3**.
- Flame proof **Ex II2G EExd IIB T5 or Ex EExd IIC T4**.
- **Ex II3D Ex tD 125°C or 135°C**.
- Sparking fan with standard motor **Ex EXII2/-G**

APPLICATIONS



Garages



Commercial or industrial drying installations



Iron and steel industries Foundries



Cooling of motors, compressors or other electrical machines



Car industry / furnace ventilation



Dust transport



CONTINUOUS OPERATION

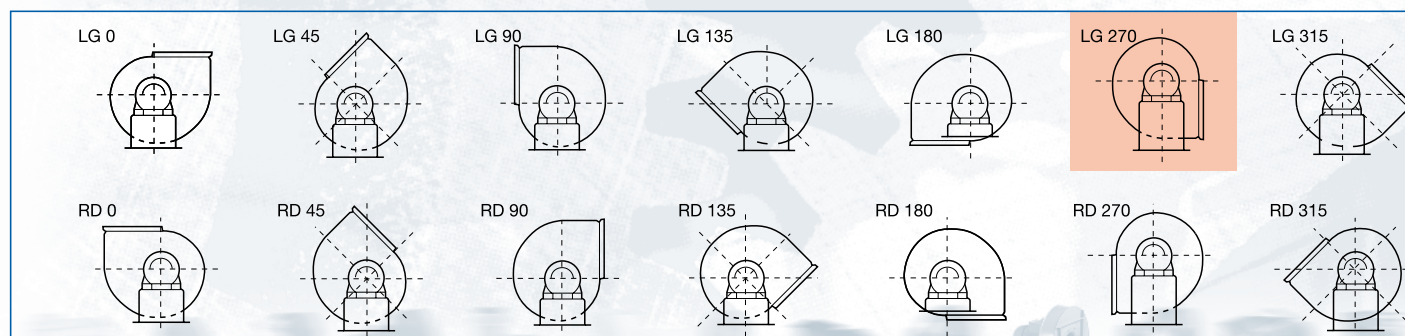


VERSIONS

CBTR

Centrifugal direct drive fans

POSITIONS



Standard position: LG 270. Special versions can be supplied under request.

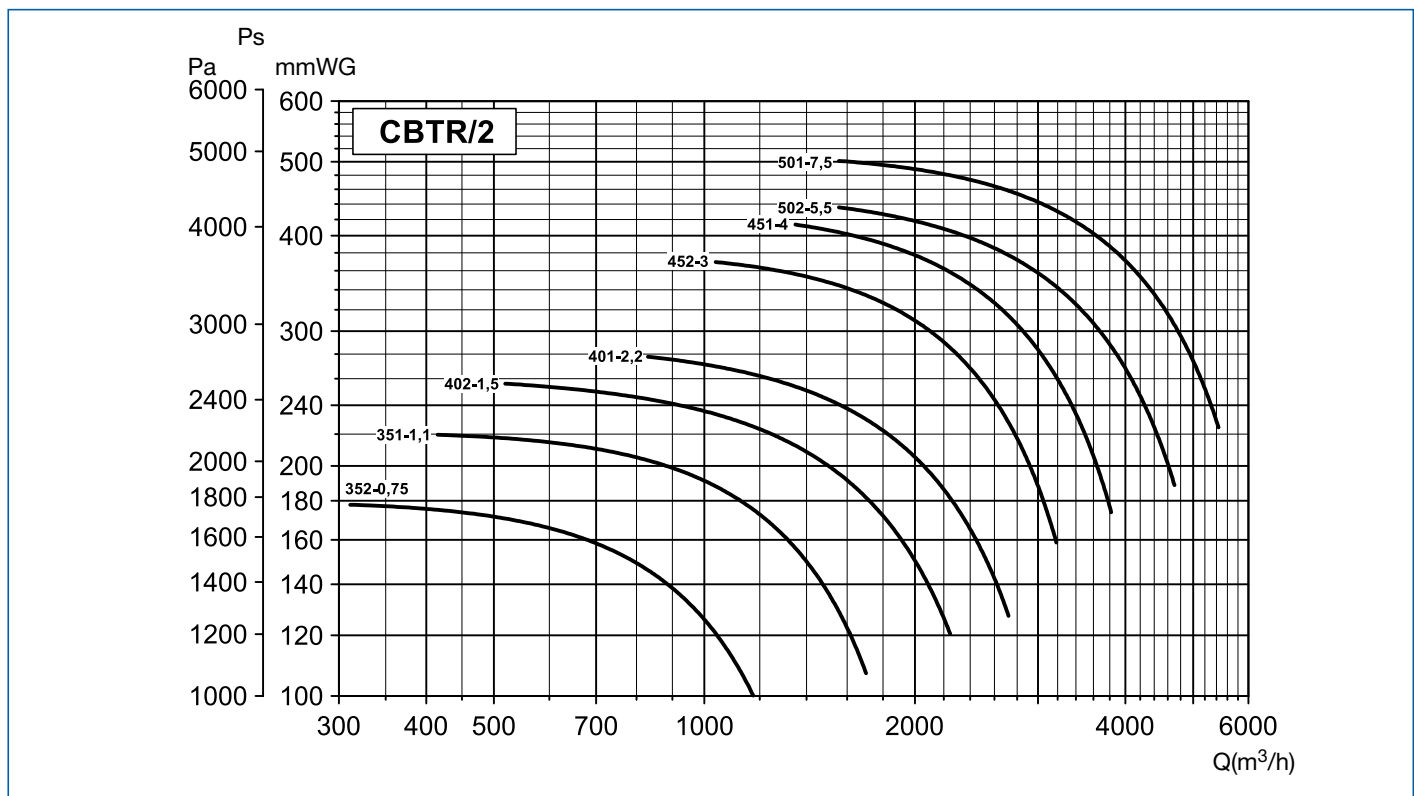
■ Technical characteristics

Before installation check that product electrical characteristics listed on the data plate label (Voltage, power, frequency etc) match those of the intended electrical supply.

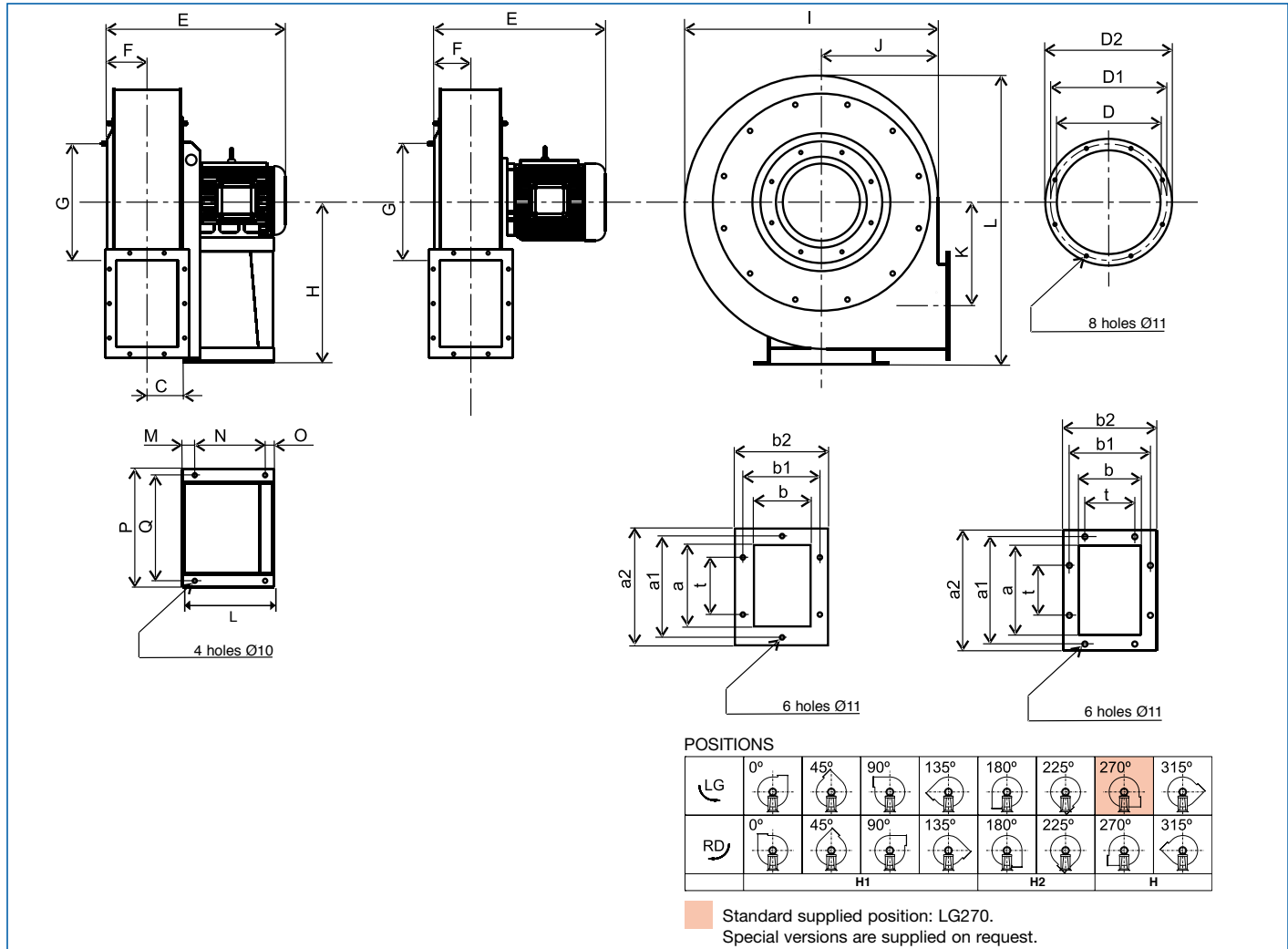
Model	Speed (r.p.m.)	Motor power (kW)	Rated absorbed current 400V (A)	Maximum airflow (m ³ /h)	Sound pressure level (dB(A))	Weight (Kg)
CBTR/2-351 1,1	2850	1,1	2,50	1.510	69	34
CBTR/2-352 0,75	2870	0,75	1,80	1.080	68	32
CBTR/2-401 2,2	2885	2,2	4,40	2.410	73	41
CBTR/2-402 1,5	2870	1,5	3,35	1.910	72	37
CBTR/2-451 4	2895	4	7,60	3.820	76	76
CBTR/2-452 3	2900	3	5,95	3.060	75	71
CBTR/2-501 7,5	2855	7,5	13,90	5.400	80	106
CBTR/2-502 5,5	2855	5,5	10,50	4.750	78	100

■ Performance curves

- Q = Air volume in m³/hr.
- Ps = Static pressure in mmWG and Pa.
- Dry air at 20°C and 760 mmHg.
- Performance data in accordance with ISO 5801 and AMCA 210-99 Standards.



■ **Dimensions (mm)**

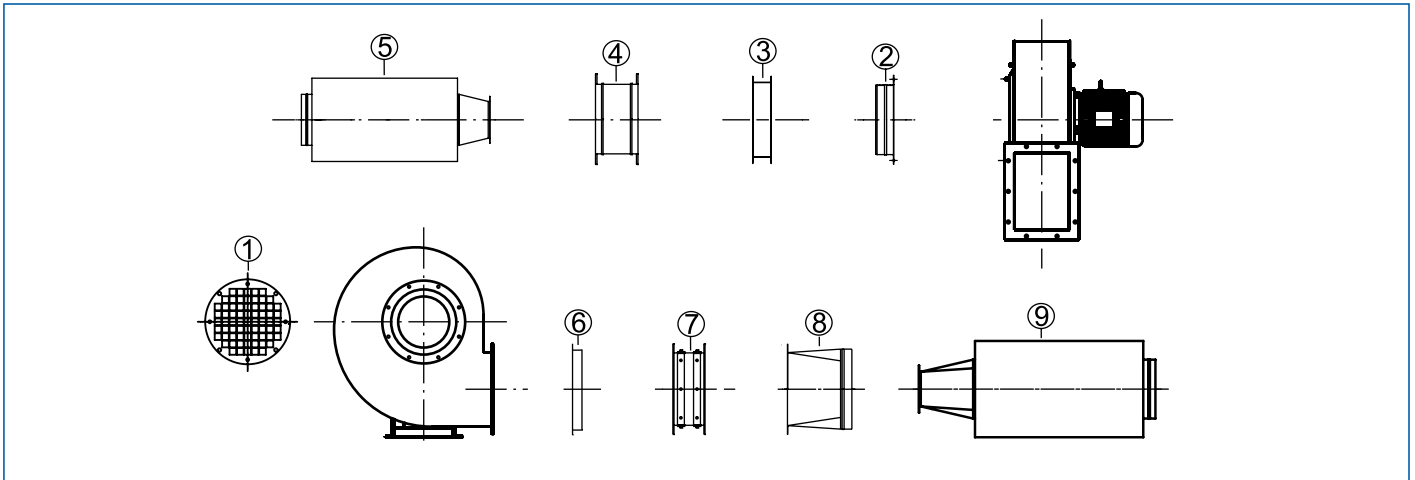


Model	C	E	F	G	H	H1	H2	I	J	K	L	M	N	O	P	Q	d
CBTR/2-351-352	60	385	68	219	355	250	355	530	250	200	585	50	125	15	235	215	10
CBTR/2-401	67	435	75	241	375	280	375	580	280	230	660	60	137	18	270	245	10
CBTR/2-402	67	410	75	241	375	280	375	580	280	230	660	60	137	18	270	245	10
CBTR/2-451	75	530	84	265	400	315	400	650	315	255	710	35	200	25	335	300	12
CBTR/2-452	75	480	84	265	400	315	400	650	315	255	710	35	200	25	335	300	12
CBTR/2-501-502	85	580	97	292	450	355	450	735	355	290	800	45	250	25	392	360	12

Model	D	D1	D2	n	Ø	a	b	a1	b1	a2	b2	t	N	Ø
CBTR/2-351-352	182	219	255	8	11	160	112	200	153	230	182	112	6	11
CBTR/2-401-402	205	241	275	8	11	180	125	219	167	250	195	112	6	11
CBTR/2-451-452	229	265	299	8	11	200	140	241	182	270	210	112	8	11
CBTR/2-501-502	255	292	325	8	11	224	160	265	200	294	230	112	8	11



■ Mounting accessories



CBTR	① Inlet guard	② Inlet flange	③ Double connection flange	④ Circular flexible connector	⑤ Inlet sound attenuator	⑥ Outlet flange	⑦ Rectangular flexible connector	⑧ Rectangular/circular connection flange	⑨ Outlet sound attenuator
352-351	KRDA-180	KRBA-180	KRBD-180	KREA-180	KRTA-180/200	KRBR-160x112	KRED-160x112	KRBI-160x112	KRTI-160x112/200
402-401	KRDA-200	KRBA-200	KRBD-200	KREA-200	KRTA-200/250	KRBR-180x125	KRED-180x125	KRBI-180x125	KRTI-180x125/250
452-451	KRDA-225	KRBA-225	KRBD-225	KREA-225	KRTA-225/315	KRBR-200x140	KRED-200x140	KRBI-200x140	KRTI-200x140/315
502-501	KRDA-250	KRBA-250	KRBD-250	KREA-250	KRTA-250/355	KRBR-224x160	KRED-224x160	KRBI-224x160	KRTI-224x160/355



KRDA



KRBA



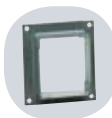
KRBD



KREA



KRTA



KRBR



KRED



KRBI



KRTI

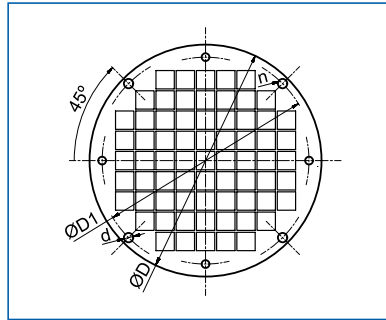
* For more information see **MOUNTING ACCESSORIES**.



■ Mounting accessories



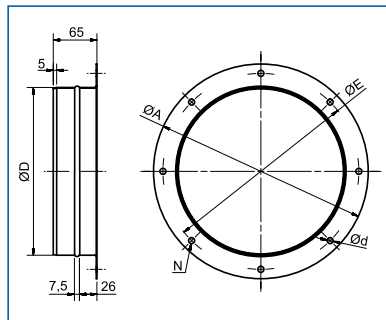
**KRDA
INLET PROTECTION GUARD**
Inlet protection guard to prevent any contact with the fan impeller.



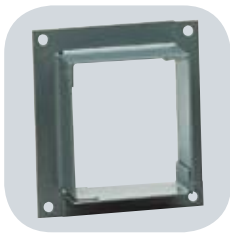
Model	D	D1	d	n
KRDA-180	240	219	9	8
KRDA-200	265	219	9	8
KRDA-225	290	265	9	8
		260	9	8
KRDA-250	320	292	9	8



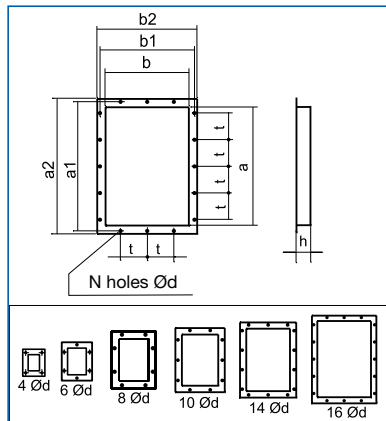
**KRBA
INLET FLANGE**
Flange to facilitate the connection of the circular duct at the fan inlet.



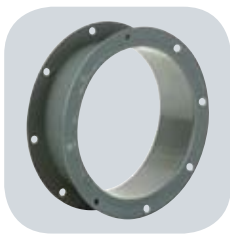
Model	D	E	A	N	d
KRBA-180	180	219	240	8	11
KRBA-200	200	241	265	8	9
KRBA-225	225	265	290	8	9
KRBA-250	250	292	320	8	9



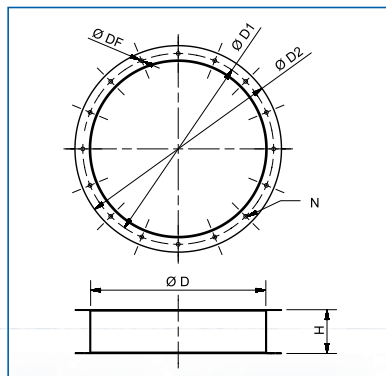
**KRBR
OUTLET FLANGE**
Flange to facilitate the connection of the rectangular duct at the fan outlet.



Model	a	b	a1	b1	a2	b2	t	N	d	h
KRBR-160X112	160	112	200	153	230	182	112	6	12	45
KRBR-180X125	180	125	219	167	250	195	112	6	12	45
KRBR-200X140	200	140	241	182	270	210	112	8	12	45
KRBR-224X160	224	160	265	200	294	230	112	8	12	45



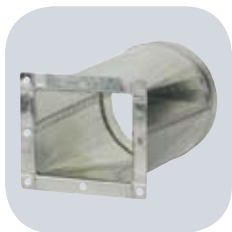
**KRBD
DOUBLE CONNECTION
FLANGE**
Double connection flange to mount at the fan inlet for the connection with a duct or a flat surface.



Model	D	D1	D2	DF	N	H
KRBD-180	180	219	240	10	8	80
KRBD-200	200	241	265	10	8	80
KRBD-225	225	265	290	10	8	80
KRBD-250	250	292	320	10	8	100

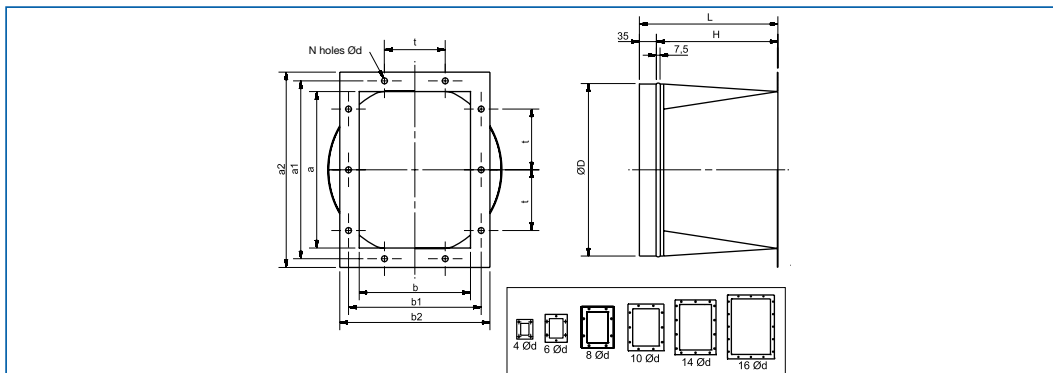


■ Mounting accessories

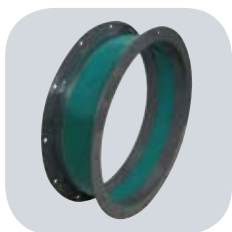


KRBI RECTANGULAR / CIRCULAR CONNECTION

Connection flange to mount at the fan outlet for connection with a circular duct.

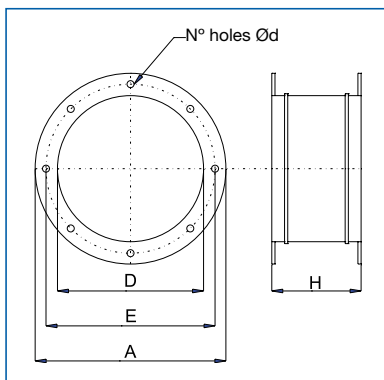


Model	a	b	a1	b1	a2	b2	t	N	d	H	L	D
KRBI-160x112	160	112	200	153	230	182	112	6	12	250	285	140
KRBI-180x125	180	125	219	167	250	195	112	6	12	250	285	150
KRBI-200x140	200	140	241	182	270	210	112	8	12	250	285	180
KRBI-224x160	224	160	265	200	294	230	112	8	12	300	335	200



KREA INLET FLEXIBLE CONNECTOR

Flexible connector manufactured from 2 inlet flanges mounted with a flexible material to connect the duct at the fan inlet. Avoid the vibrations.

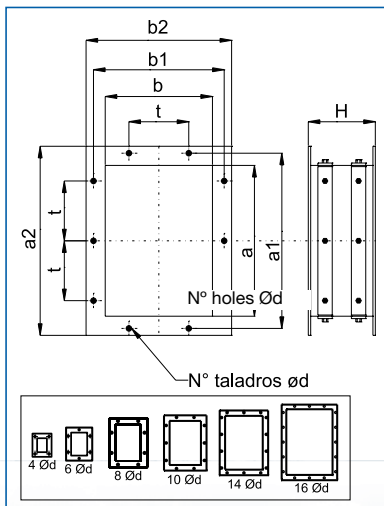


Model	D	E	A	H	N	d
KREA-180	180	219	240	140	8	11
KREA-200	200	241	265	140	8	9
KREA-225	225	265	290	140	8	9
KREA-250	250	292	320	140	8	9



KRED OUTLET FLEXIBLE CONNECTOR

Flexible connector manufactured from 2 inlet flanges mounted with a flexible material to connect the duct at the fan outlet. Avoid the vibrations.



Model	a	b	a1	b1	a2	b2	t	H	N	d
KRED-160x112	160	112	200	153	230	182	112	140	6	12
KRED-180x125	180	125	219	167	250	195	112	140	6	12
KRED-200x140	200	140	241	182	270	210	112	140	8	12
KRED-224x160	224	160	265	200	294	230	112	140	8	12

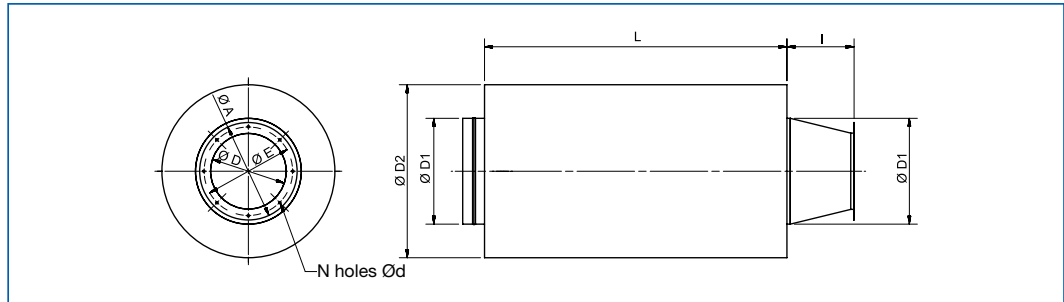


■ Mounting accessories



KRTA INLET ATTENUATOR

Circular attenuator for mounting at the fan inlet. Incorporate circular inlet flange.

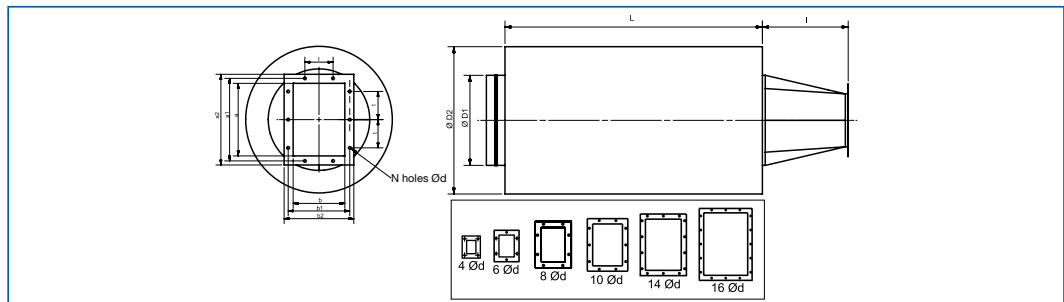


Model	D	E	A	N	d	L	I	D1	D2
KRTA-180/200	180	219	240	8	11	600	150	200	400
KRTA-200/250	200	241	265	8	9	900	150	250	450
KRTA-225/315	225	265	290	8	9	900	200	315	515
KRTA-250/355	250	292	320	8	9	900	200	355	555



KRTI OUTLET ATTENUATOR

Circular sound attenuator for mounting at the fan outlet. Incorporate outlet rectangular flange.



Model	a	b	a1	b1	a2	b2	t	N	d	L	I	D1	D2
KRTI-160x112/200	160	112	200	153	230	182	112	6	11,5	900	250	200	400
KRTI-180x125/250	180	125	219	167	250	195	112	6	11,5	900	300	250	450
KRTI-200x140/315	200	140	241	182	270	210	112	8	11,5	900	300	315	515
KRTI-224x160/355	224	160	265	200	294	230	112	8	11,5	900	300	355	555

